

# HOW TO CREATE SCHOOL AND WORK RELATIONSHIPS THAT TRANSFORM LIVES AND LIVELIHOOD IN RURAL COLORADO

---

Crafting a Community Gameplan

# PURPOSE

---

This digital booklet is designed to ignite, support and connect local efforts to build productive relationships between work, learning and community. In a world where work and learning are constantly changing, we need to do different things and do things differently.

Rural communities have a much better chance of thriving when the connections between school and work are natural, vibrant, and reciprocal.

Please use this tool to advance your dreams and accelerate opportunity for all your students.

# USE

---

This is a living and interactive tool that can be used in at least three ways:

- 1 It provides resources and tools to help you craft your own community-based school and work gameplan.
- 2 It easily connects you to local and national resources, initiatives, and/or organizations that can help you move forward.
- 3 It allows you to share your story and be part of a growing national rural school and work network.

# KNOW THE GAME



---

Why Focus on School and Work Relationships







# LIFE CHANCES

**What are the factors that shape  
who we become?**

*Click an icon to discover data about your community.*



## WELL-BEING

*Robert Wood Johnson Foundation:  
County Health Rankings*



## BELONGING

*Social Capital Project:  
Social Capital Score by County*



## EDUCATION

*The Rural School and Community Trust:  
Performance, Equity and Readiness  
Indicators by State*



## OPPORTUNITY

*The Opportunity Index by Zip Code*



## HEALTH

*Robert Wood Johnson Foundation:  
County Health Rankings*



## WEALTH

*Colorado Department of Labor:  
Labor Market Information by County*

**TO LEARN MORE ABOUT YOUNG  
PEOPLE IN YOUR COMMUNITY,  
START BY VISITING:**

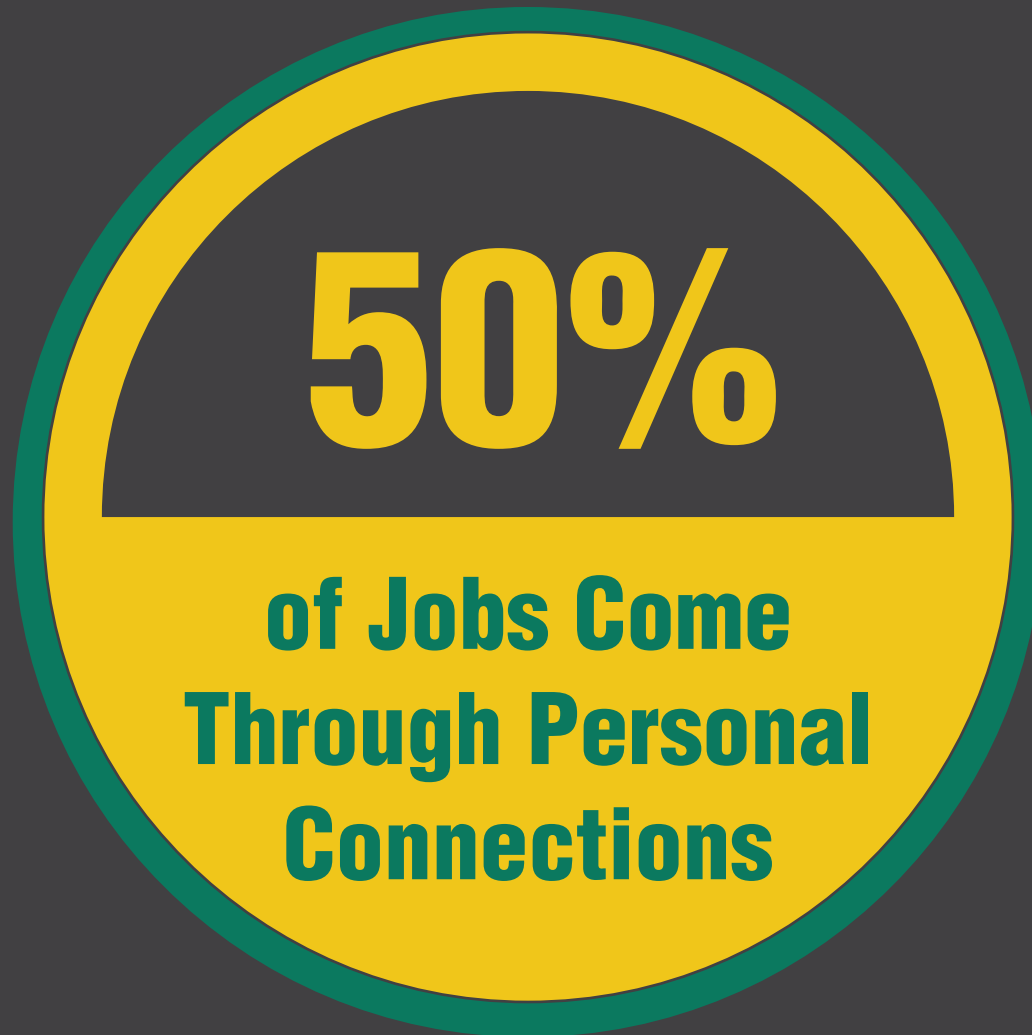
---

**[factfinder.census.gov](https://factfinder.census.gov)**

**[ocrdata.ed.gov](https://ocrdata.ed.gov)**

**[act.org](https://act.org)**

**OUR LIFE CHANCES ARE PROFOUNDLY  
SHAPED BY WHO WE KNOW AND THE  
COMPANY WE KEEP**





**Parents of low income students are**

**2X less likely**

**to have personal connections with  
politicians, CEOs, and professors  
than middle- to high-income parents.**





The relationship between school and work impacts our life chances ... because connecting learning and working experiences **builds readiness and resilience.**

**100%**  
of Students Need  
Emotional, Relational,  
and Academic  
Supports





How do we best help every student **transition successfully** from school to work?

What **opportunity gaps and inequalities** need to be addressed?

How do we support the relationships that **increase the chances** for a meaningful life?





There are many ways to **connect school and work** learning experiences that **build readiness and resilience**—experiences that shape how we live our lives, make our livelihood, and adapt to change.

Communities that thrive help connect **what students know with who students know.**

# START A NEW GAME



---

What Communities Can Do





# GETTING YOUR HEAD IN THE GAME

---

## **Growing ready and resilient learners**

- **Supportive relationships**
- **Adaptive skills**
- **Positive learning experiences**

## **Activating a network of resources and relationships**

- **Postsecondary guidance, access and success**
- **Work-based learning**
- **Academic support and encouragement**

## SOME “STARTER” QUESTIONS

- What **skills** do a high school graduate need to succeed?
- How well are our young people transitioning into adulthood **ready for work**?
- Which students are not getting a **fair shot** and why?
- Are **local jobs** attractive and viable?
- How do we **grow** good jobs?
- How healthy is the **entrepreneurial spirit** in our local economy?
- Are we really **nurturing** the interest and talents of each learner?
- What are the essential factors that influence **learner readiness and resilience**?
- Which local school and work programs do **kids trust and use most**?
- What **partners and opportunities** do you see?



# **BUILD YOUR NETWORK, PICK YOUR PLAYS, ASSEMBLE YOUR TEAM, AND GET TO WORK.**

## **Complete these steps to make your gameplan:**

- **Initial Survey:** Answer a few questions about yourself and your community.
- **Identify Partners:** List organizations in your community who represent the sectors necessary to build a network.
- **Select Plays:** Learn how you can put network building strategies into action.
- **Set Goals:** Establish measurable objectives that your network will work to achieve.
- **Assemble your Team:** Assemble a team of collaborators who can help you move this work forward.
- **Communicate and Educate:** Create presentations for the audiences your team will need to recruit.
- **ACT:** Take your gameplan and share it with your team to get started

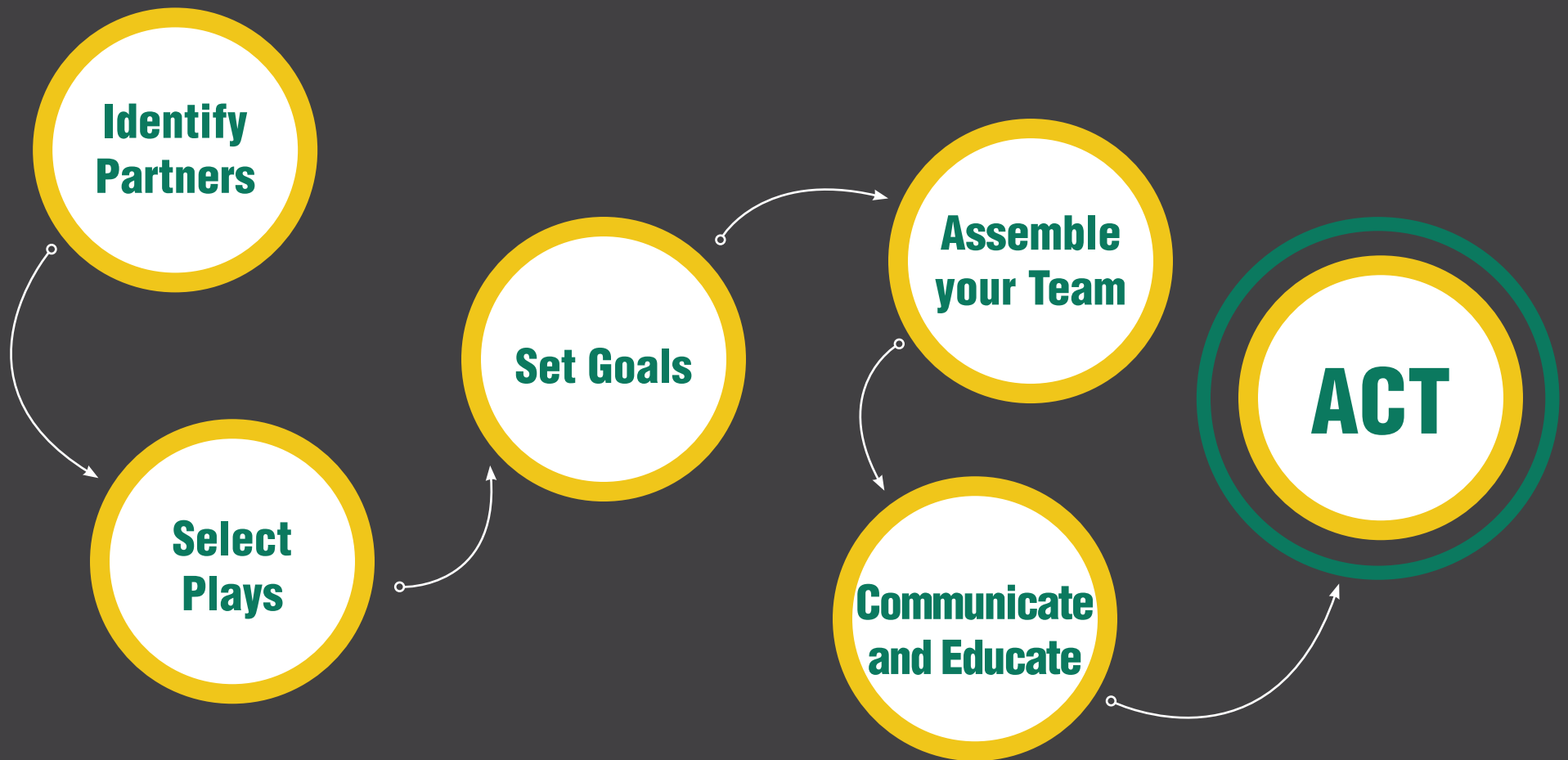


# CRAFTING A COMMUNITY GAMEPLAN

**School and Work Relationships Focused on Learner Readiness and Resilience**

*Click an icon to help you fill out your gameplan.*

**Let's start by answering a few questions about yourself and your community [here](#).**



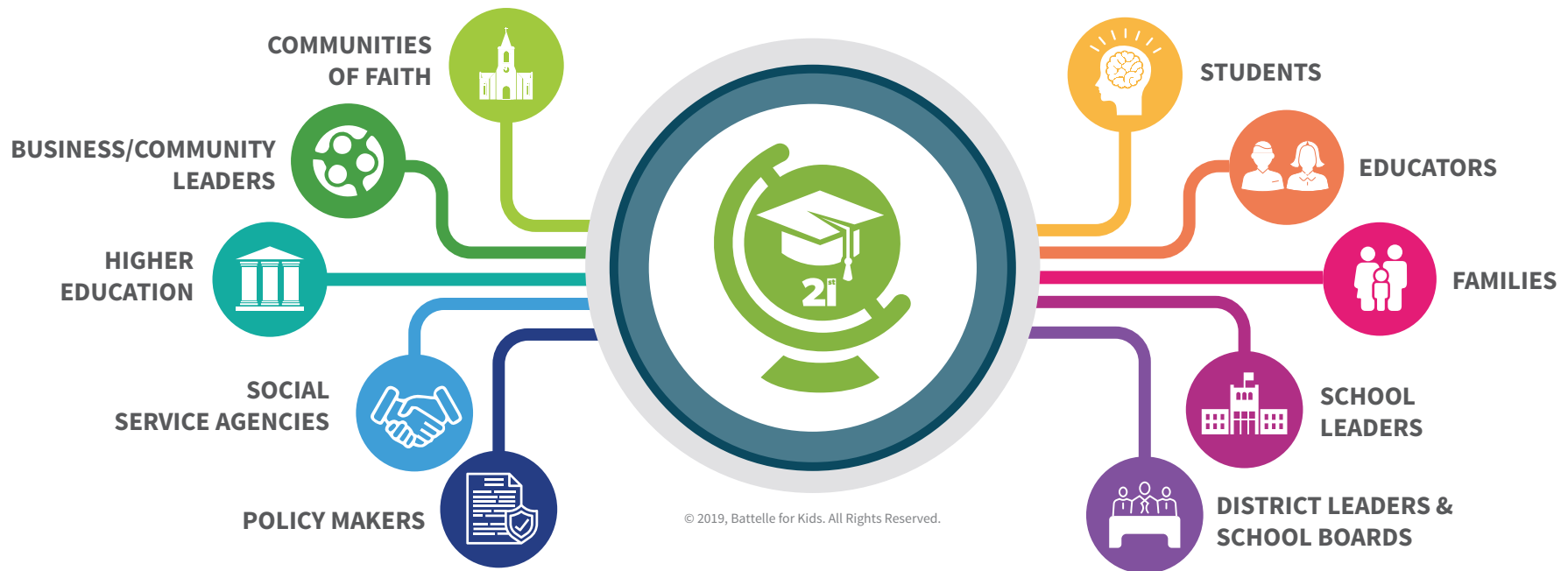
# 3 POTENTIAL GAME CHANGERS

- 1 IDENTIFY DESIRED STUDENT OUTCOMES**
- 2 INTEGRATE SCHOOL AND WORK SUPPORTS**
- 3 ENRICH EACH STUDENT'S NETWORK**

# 1 IDENTIFY DESIRED STUDENT OUTCOMES

## ENGAGE THE COMMUNITY IN THE CONVERSATION!

Here is an example of a free [online tool](#) to help communities determine what they want for their children.



This tool is designed to gather and coordinate a variety of community perspectives.

## 2 INTEGRATE SCHOOL AND WORK SUPPORTS

*Click on logos to learn more.*

### Postsecondary Guidance, Access and Success



---

### Work-Based Learning and Industry Engagement



---

### Academic Support and Encouragement



3

# ENRICH EACH STUDENT'S NETWORK

*Click on logos to learn more.*

## Leadership Opportunities and Connections



---

## Mentoring Opportunities and Connections

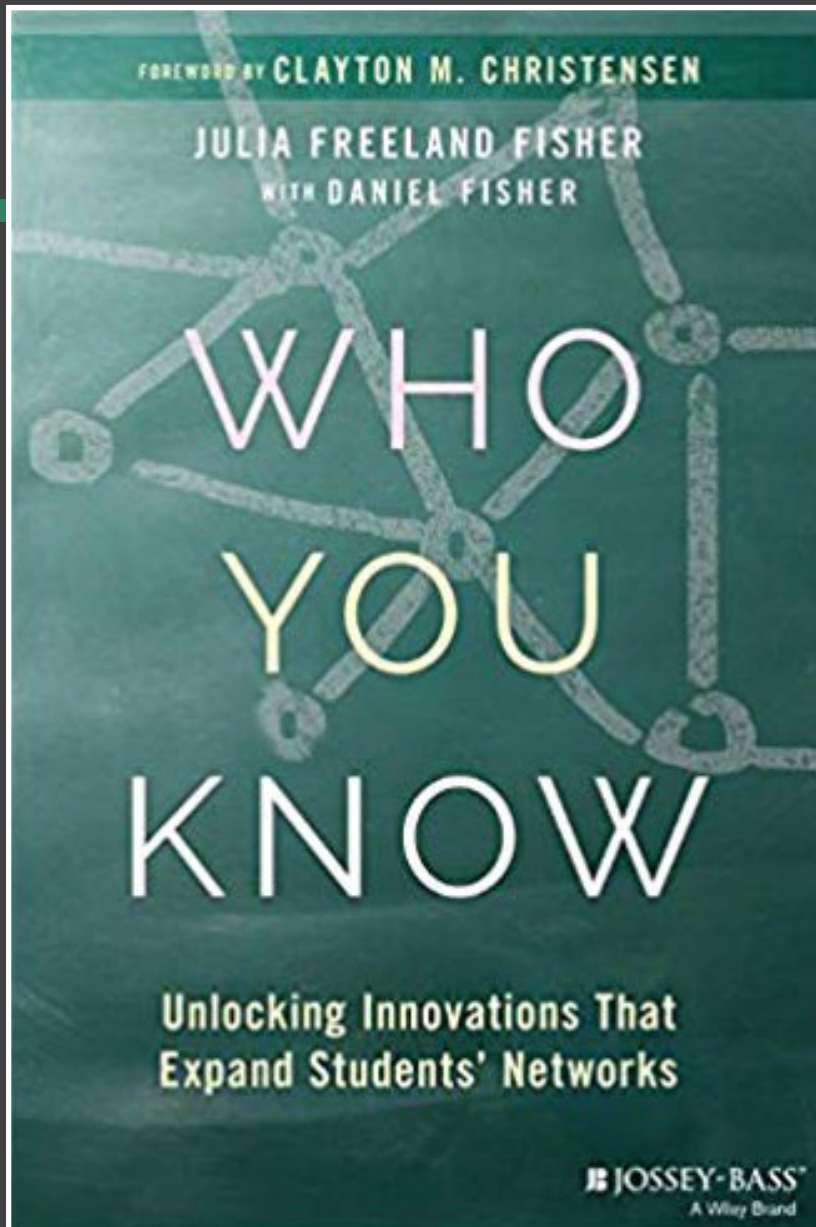


---

## Building Resilience Through Positive and Diverse Relationships







# USE TECHNOLOGY TO BUILD SOCIAL CAPITAL FOR YOUTH

## WHO YOU KNOW MATTERS.

Connecting students to new relationships—with coaches, experts, mentors, and peers.

**[Click here](#) for a searchable market map of tools and platforms to help students build social capital.**

*(Managed by the Christensen Institute)*

# LOOK IN YOUR OWN BACKYARD



COLORADO  
SUCCEEDS



**My Colorado Journey**





## **BB2C CASE STUDY**

**Learn more about how  
an Ohio Appalachian  
community designed  
and implemented its  
own gameplan.**

**Download [here](#)**

# ENGAGE THE PLAYERS



---

Empowering Students



# STUDENT VOICE AND AGENCY MATTERS

---

- 1** Connect to all students, particularly those who face opportunity gaps.
- 2** Enlist high school students and young adults in designing and advancing the gameplan.

## TIP

You can download this module from the Youth and Aspirations section of [xqsuperschool.org](https://xqsuperschool.org)

# **WE WANT TO HEAR FROM YOU**

---

**[Click here](#)** to submit your desired student outcomes.

**[Click here](#)** to submit your community gameplan.

**[Click here](#)** to submit specific school and work programs and initiatives that are making a difference in your community.

**Battelle for Kids has designed this electronic booklet to support the development of your community gameplan.**

# INITIAL PLAYBOOK DESIGN SUPPORTED BY

---

Ohio University-Voinovich School of Leadership and  
Public Affairs, TechGrowth Ohio, Building Bridges to Careers  
and Battelle for Kids