

The Mississippi Teacher Performance Standards include the effective use of formative instructional practices.

What are Formative Instructional Practices?

Formative instructional practices are the formal and informal ways that teachers and students gather and respond to evidence of learning. Extensive research shows that using formative instructional practices can increase educator effectiveness and student achievement.

Through a partnership with Battelle for Kids, IMPACT Mississippi Education is now providing professional development to deepen Mississippi K–12 educators’ ability to implement formative instructional practices (FIP) to accelerate student learning.

A series of seven formative instructional practices online modules, developed by Battelle for Kids in partnership with Pearson Assessment Training Institute, is available to support this blended learning experience.

These online learning modules are designed to:

- Encourage independent and collaborative learning;
- Help educators understand how to plan for and deliver instruction and assessment of new standards; and
- Accelerate professional growth consistent with the Mississippi Statewide Teacher Appraisal Rubric (M-STAR).

The formative instructional practices online learning modules include:

Foundations of Formative Instructional Practices*



Module 1: Introduction to Formative Instructional Practices



Module 4: Analyzing Evidence and Providing Effective Feedback



Module 2: Clear Learning Targets



Module 5: Student Ownership of Learning: Peer Feedback, Self-Assessment, and More



Module 3: Collecting and Documenting Evidence of Student Learning

* Note: The Foundations of Formative Instructional Practices modules are designed to be taken as a set, in sequential order.

Leading and Coaching Formative Instructional Practices



Module 6: Leading Formative Instructional Practices



Module 7: Coaching Formative Instructional Practices

Using Formative Instructional Practices to Advance Educator Effectiveness

Mississippi Teacher Performance Standards	Formative Instructional Practices Online Learning Modules						
Domain I: PLANNING	Module 1	Module 2	Module 3	Module 4	Module 5	Module 6	Module 7
1. Plans lessons that demonstrate knowledge of content and pedagogy							
2. Plans lessons that meet the diversity of students' backgrounds, cultures, skills, learning levels, language proficiencies, interests, and special needs							
3. Selects instructional goals that incorporate higher level of learning for all students							
4. Plans units of instruction that align with the Mississippi Curriculum Frameworks or, when applicable, the Common Core State Standards							
Domain II: ASSESSMENT							
5. Collects and organizes data from assessments to provide feedback to students and adjusts lessons and instruction as necessary							
6. Incorporates assessments into instructional planning that demonstrate high expectations for all students							
Domain III: INSTRUCTION							
7. Demonstrates deep knowledge of content during instruction							
8. Actively engages students in the learning process							
9. Uses questioning and discussion techniques to promote higher order thinking skills							
10. Brings multiple perspectives to the delivery of content							
11. Communicates clearly and effectively							
Domain IV: LEARNING ENVIRONMENT							
12. Manages classroom space and resources effectively for student learning							
13. Creates and maintains a climate of safety, respect, and support for all students							
14. Maximizes time available for instruction							
15. Establishes and maintains a culture of learning to high expectations							
16. Manages student behavior to provide productive learning opportunities for all students							
Domain V: PROFESSIONAL RESPONSIBILITIES							
17. Engages in continuous professional development and applies new information learned in the classroom							
18. Demonstrates professionalism and high ethical standards; acts in alignment with the Mississippi Code of Ethics							
19. Establishes and maintains effective communication with families							
20. Collaborates with colleagues and is an active member of a professional learning community in the school							



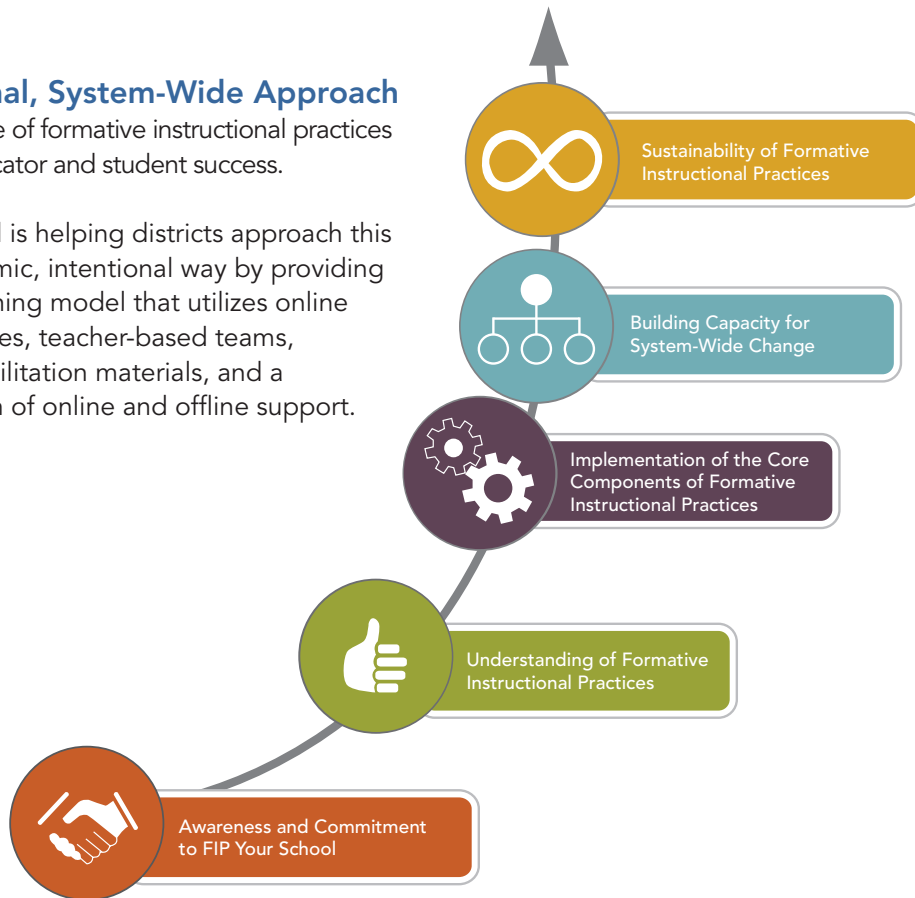
Guided Support through FIP Your School®

Formative instructional practices are vital to improving student achievement and ensuring that every student is college and career ready. The goal of FIP Your School is to make every school in partnership with IMPACT Mississippi Education—a school where **all** stakeholders are learners who intentionally use formative instructional practices.

An Intentional, System-Wide Approach

System-wide use of formative instructional practices is critical to educator and student success.

FIP Your School is helping districts approach this work in a systemic, intentional way by providing a blended learning model that utilizes online learning modules, teacher-based teams, high-quality facilitation materials, and a regional system of online and offline support.



To learn more:

About enrolling in online learning or professional development to embed formative instruction in your school: Contact Scott Lewis, IMPACT Mississippi Education, at slewis@impactmsed.com.

About technical support for formative instructional practices online courses: Contact Battelle for Kids at Support@BattelleforKids.org or call 1-866-543-7555.

