



Singapore's Education System

Presentation at the Global Education Summit

5 November 2012 Columbus, Ohio



Ministry of Education, Singapore

Integrity, the Foundation ■ People, our Focus ■ Learning, our Passion ■ Excellence, our Pursuit

Singapore's Education System Has Evolved



**Develop workforce
for our economy**

**Student-Centric,
Values-Based**
• 2011 onwards

**Ability-Based,
Aspiration-Driven**
• 1997–2011

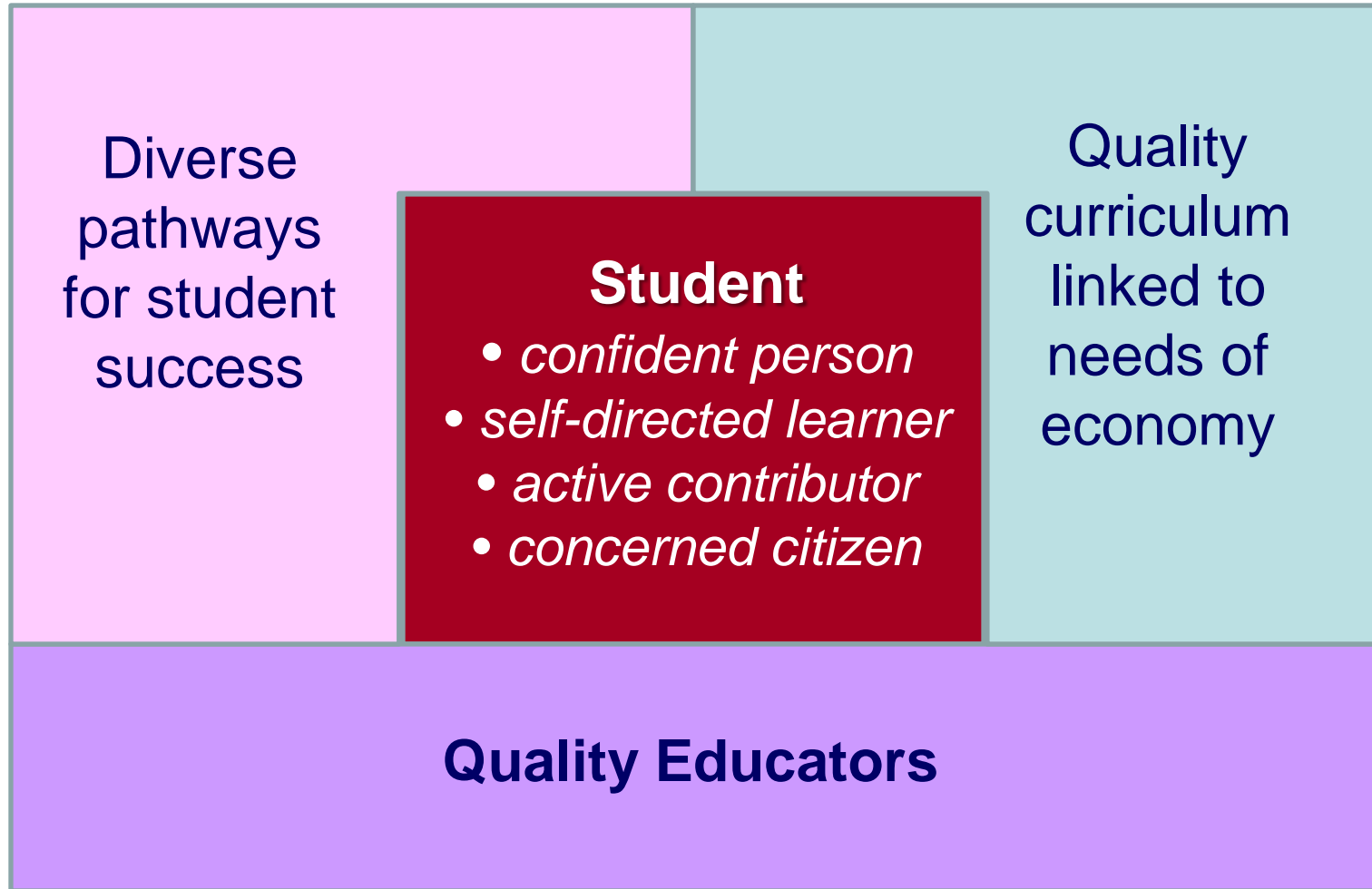
Efficiency-Driven
• 1979–1996

**Fulfil the aspirations
of our children**

Survival-Driven
• 1959–1978



The Child at the Centre



Quality Curriculum Linked to Needs of Economy

Developing a Competitive Workforce to Support our Economy

- People are Singapore's only natural resource.
- Close coordination to develop these connections.
 - Coordinated manpower planning between government agencies.
 - Close nexus between post-secondary institutions and industry.
 - National curriculum developed with view of future needs of economy.

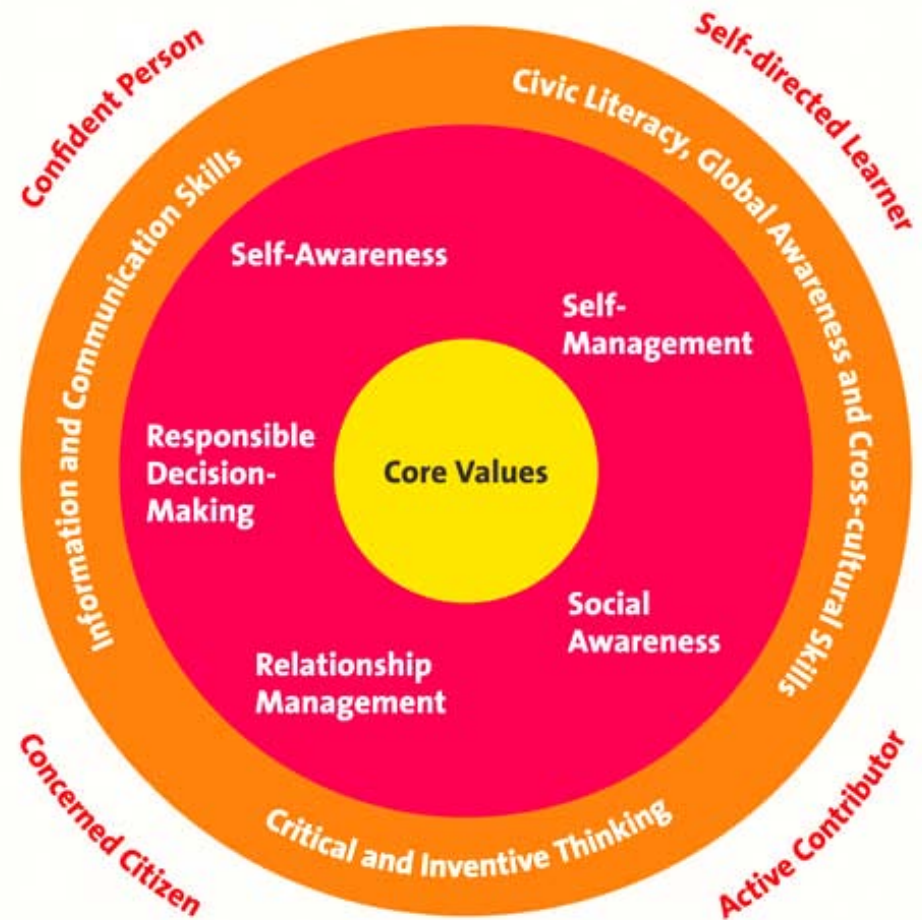


Quality Curriculum Linked to Needs of Economy

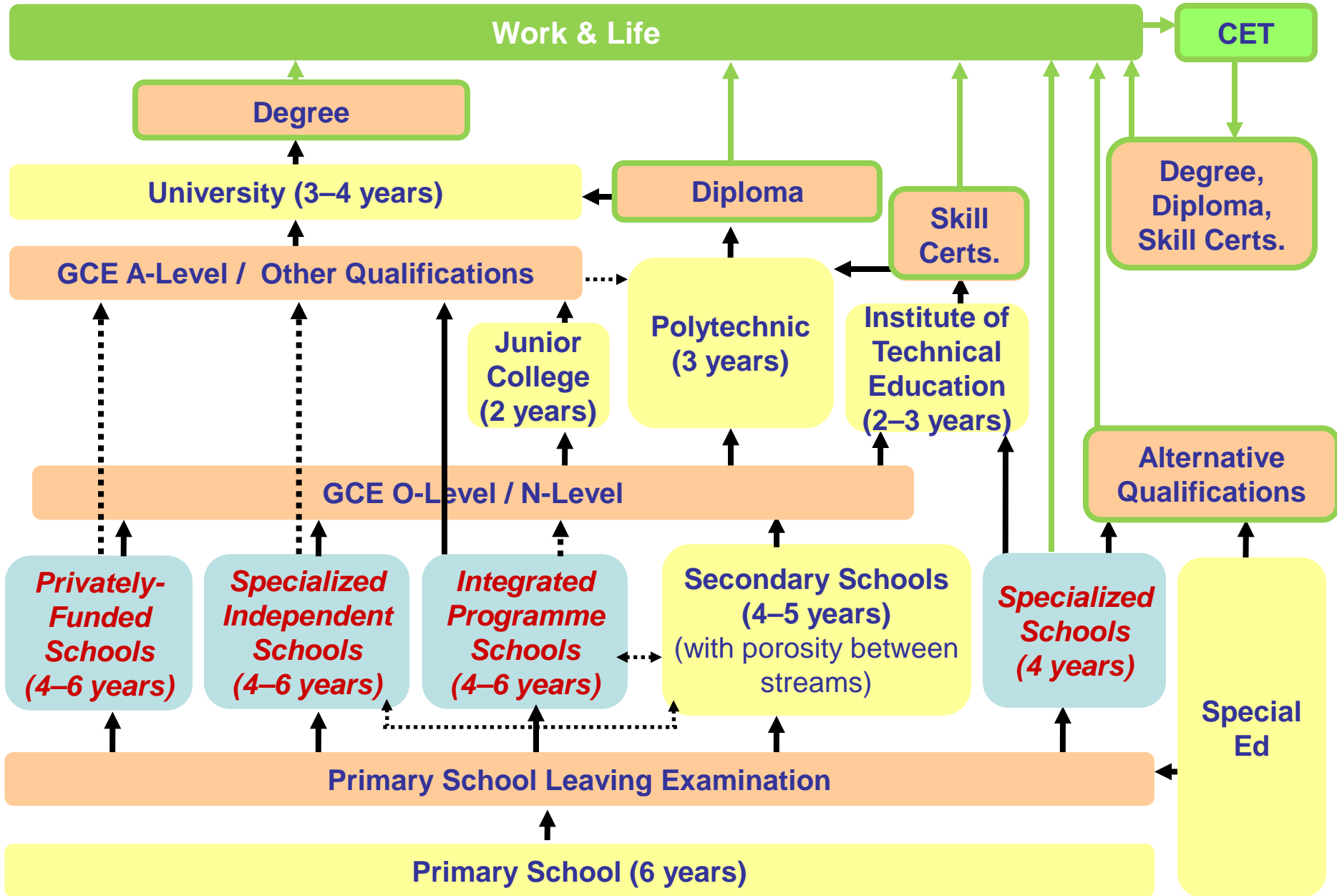
Strong Fundamentals Future Learning

- Literacy & numeracy
- Competencies for 21st Century

Competencies for 21st Century



Diverse Pathways for Student Success



Diverse Pathways for Student Success

Schools designed to cater to different talents/learning styles

Specialised Independent Schools

- Catering to talents in the arts, sports, math, science, and technology,



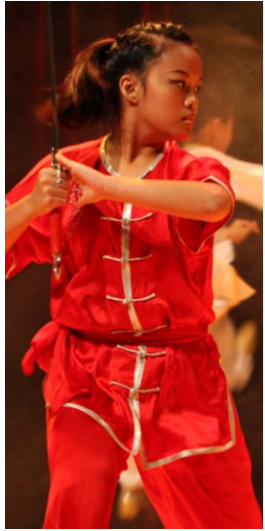
NorthLight School and Assumption Pathway School

- Hands-on, vocational training with aim to consolidate core literacy, and numeracy skills,
- Offer ITE Skills Certificates,



Diverse Pathways for Student Success

Mainstream schools catering to different talents/needs



Developing diverse talents & interests

- Wide range of elective subjects at upper secondary/post-sec.
- Co-curricular activities.
- Enrichment programs.

Targeted assistance programmes

- Learning support programs.
- Special needs.
- Support for at-risk students.
- Financial assistance.



Building a Quality Education Service

Quality Educators

- 33,000 teaching staff.
- Selecting from top 30% of cohort.
- All-graduate recruitment by 2015.



Opportunities for Development

- Career progression.
- Professional development.
- Leadership development.



Building a Quality Education Service

National Institute of Education

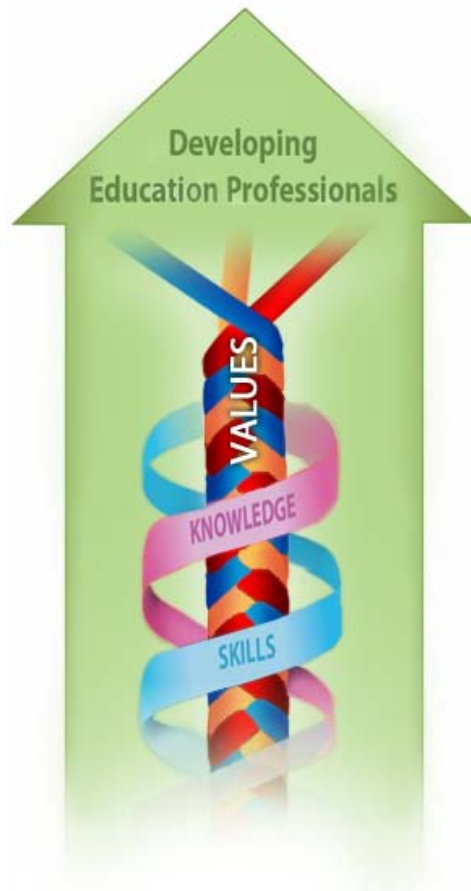
- Teacher education and educational research.
 - Sole institute for pre-service teacher education.
 - In-service professional development.
 - Graduate studies.



Building a Quality Education Service

NIE Teacher Education Model for the 21st Century (TE21)

V³SK Model



V1 – Learner-Centered Values

- Empathy
- Belief that all children can learn
- Commitment to nurturing the potential in each child
- Valuing of diversity

V2 – Teacher Identity

- Aims for high standards
 - Enquiring nature
 - Quest for learning
 - Strive to Improve
 - Passion
- Adaptive & Resilient
 - Ethical
- Professionalism

V3 – Service to the Profession and Community

- Collaborative learning and practice
- Building apprenticeship and mentorship
- Social responsibility and engagement
- Stewardship

SKILLS

- Reflective skills & thinking dispositions
 - Pedagogical skills
- People management skills
 - Self-management skills
- Administrative & management skills
 - Communication skills
 - Facilitative skills
 - Technological skills
- Innovation and Entrepreneurship skills
- Social and emotional intelligence

KNOWLEDGE

- Self
- Pupil
- Community
- Subject content
 - Pedagogy
- Educational Foundation & Policies
 - Curriculum
- Multicultural literacy
- Global awareness
- Environmental awareness

Graduate and Teacher Competencies: Professional Practice, Leadership & Management, and Personal Effectiveness

Building a Quality Education Service

Teacher Academies to promote professional growth



Physical Education and Sports Teacher Academy



STAR
Singapore Teachers' Academy for the Arts



ELIS ENGLISH LANGUAGE INSTITUTE OF SINGAPORE

新加坡华文教研中心
Singapore Centre for Chinese Language



Behind the Scenes of a Quality Education System

Close links between Ministry of Education, Schools and NIE

- Teacher education programmes aligned with Ministry's direction.
- Regular communication between Ministry and schools.
- Partnership between NIE and schools.
- Frequent sharing among schools.
- Movement of educators across different parts of the system.



Key Success Factors

